

PHOTOMAPPING SERVICES

Latest LiDAR Technology



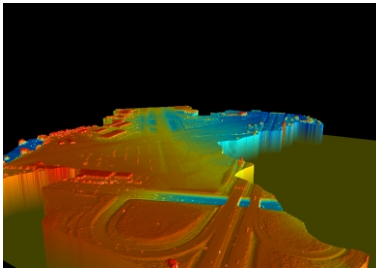
ALTM Gemini & Accesories

Photomapping Services has added to its airborne sensor capability with the purchase of an Optech ALTM Gemini airborne LiDAR system. The ALTM Gemini is the state of the art in airborne laser scanner technology and includes the multi-pulse capability that enables higher pulse repetition rates at higher altitudes. The onboard setup includes an Applanix IMU and digital camera linked to the LiDAR unit.

Advantages of LiDAR

LiDAR or airborne laser scanning offers the advantage of collecting and processing a large volume of 3D data in a comparatively short time. Further advantages of LiDAR include:

- Fewer ground control required
- Reduced cost of data collection
- Increased data collection density
- Ability to Penetrate through dense forest
- Operation is less dependent on weather (can operate at night and under cloud)
- Simultaneous collection of ground and non ground information



3D View of LiDAR data

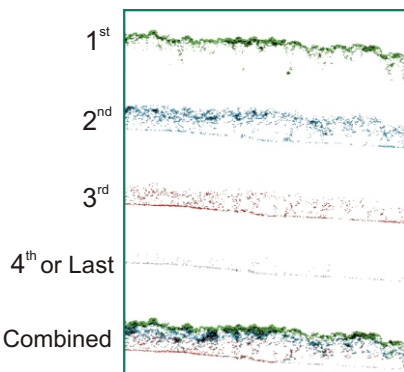
Advantages of the ALTM Gemini

- Can send out multiple pulses
 - Captures higher density of points
 - Thus more data is captured per flight time

Applications

Common LiDAR applications:

- Large projects especially for DEM only
- Linear projects- powerlines and pipelines
- Drainage and flood mapping
- Forestry mapping - maps ground and tree characteristics
- Hard to access and sensitive locations
- Urban Modelling



LiDAR Returns in Plan View
1st to 4th returns
Combined Returns

(Images Courtesy of Optech)

PHOTOMAPPING SERVICES

133 Abbotsford Street North Melbourne Victoria 3051
PO Box 369 North Melbourne Victoria 3051
Telephone : (03) 9328 3444 Facsimile : (03) 9326 6476
Email : phomap@photomapping.com.au
www.photomapping.com.au